

Welcome to  
**Meadowlark Elementary**  
**And**  
**Buena Vista Spanish Immersion School**

TABLE OF CONTENTS

Page 1 - Welcome back from BJ Blake

Page 2 - Important dates and times to remember

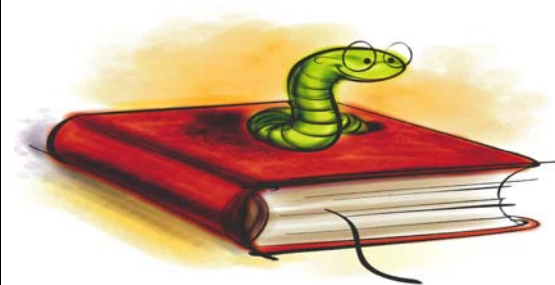
Page 3 - Student Attendance information  
Traffic Flow information  
Front Office  
Attendance

Page 4 - After School Plans  
Lunches  
Free/Reduced Lunches

Page 5 - Staff Information

Page 6 - Immunizations  
Medication at School  
Supervision Hours  
Animals at School

Page 7 – Library News  
Website Addresses  
Parent Handbook  
Money For Minds  
Volunteer Information



Page 8- Treats in Classroom  
Peanut Butter at School  
Smart Ways to School

Page 9 - Directory Release Form

Page 10- 11 Bus Route Information

Page 12- 15 School Supply List Information

Page 16 – Event Calendar

Page 17 – Work Study Needed



## Welcome Back Meadowlark and Buena Vista Families,

I am very excited to be back for a third year with the best staff, families and students in all of Eugene! Many building remodel changes have occurred during the summer, thanks to the 2002 Levy Passage. The many changes are listed below:

- \* The gym now has more storage and a BATHROOM
- \* Front office remodel with safety and access as a focus
- \* Front office bathroom redone
- \* Flooring in staff room redone
- \* Front entry remodel with an eye for safety
- \* More windows at the end of halls and office area
- \* Hot water system

Jan and Ruth will be “camping out” in their offices until the end of September when their desks are due to arrive. In the mean time, they appreciate your patience during this first month back as they live out of boxes. Be sure to check out all the new improvements to our school!

Congratulations to both schools on their reading and math performance in the Oregon State Assessment testing. Ninety five percent of Meadowlark and BV students passed these tests. **Well done!**

You will see some new faces and some old faces in new places around this year. Patrice Cowman will be teaching first grade in room 16. Dayna Mitchell, still teaching special education, has moved into room 15. KED’s teacher Trish Egge, a long time 4j employee who comes to us after a year of leave, will be in room 14 with Mrs. Schwieger. We are very excited that Robin Longnight, an experienced counselor and certified teacher, will be joining the Meadowlark staff, helping to support our students and families. Mary Fuller joins our staff from Magnet Arts as our second/third combination classroom teacher. She is an excellent teacher who is already an important part of the Meadowlark team. We are still looking for a PE teacher and will keep you posted..

In Buena Vista, Bea Downes will be moving from the facilitating teacher position into room 10, teaching 2nd grade English. Taking her place is Mario Sagastume, a well known face at Buena Vista. Mario taught summer school with Sra. Colon for the past three years after completing his student teaching with her in 1998 and working at BV as facilitating teacher in 2002-2003.

Joining both staffs is Chris Dobson, who will be teaching music. You all know Chris, as he was Sharon’s student teacher last year. We are excited to have him on staff.

Both schools are moving into the school year with exciting changes to the curriculum. Buena Vista begins its first full immersion classrooms at first grade. The new curriculum has arrived and Sra. Sarah (newly married!) and Sra. Margarita are ready to teach a full day of Spanish. Having received the Meyer Memorial grant for math manipulatives, we will be purchasing new math materials to supplement the regular math curriculum with hands-on activities. The upper grade Meadowlark teacher’s have received a grant that allowed us to purchase 30 Palm Pilots and a mobile palm teaching center. The three upper grade teachers, Mrs. Smith, Mrs. Ryan and Mrs. Harris went to 3 days of training this summer in how to use the Palms with students and are very excited to begin. They will be sharing their new knowledge with all the staff at our first in-service of the year.

Everyone at Meadowlark and Buena Vista welcomes you “back to school!” Please stop by and say “Hi.” Please read closely the information inside concerning traffic safety and new safety procedures for entering the school. Feel free to call or email me if you have any questions, concerns or just want to talk. Its going to be a great year and I look forward to seeing you at the OPEN HOUSE on September 6<sup>th</sup> at 2:30 p.m.

Sincerely,  
BJ Blake, Principal



Email: [blake@4j.lane.edu](mailto:blake@4j.lane.edu)

Phone: 687-3368

✂Important information for your convenience✂	
<b>Meadowlark Elementary</b>	<b>Buena Vista Spanish Immersion</b>
First bell rings at 7:55	First bell rings at 8:10
School start time 8:05	School start time 8:20
School release time 2:15 M, Tue, Th, and F	School release time 2:30 M, Tue, Th, and F
Release time 1:15 on Wednesday	Release time 1:30 on Wednesday
<b>Important phone numbers</b>	
Attendance line (for calls outside of school hours) 334-4898	
School office 687-3368	
<b>Office Staff contacts with email address</b>	
Ms. BJ Blake, Principal, <a href="mailto:blake@4j.lane.edu">blake@4j.lane.edu</a>	
Jan Hahn, School Secretary, <a href="mailto:hahn@4j.lane.edu">hahn@4j.lane.edu</a>	
Ruth Mann, Department Assistant, records and attendance, <a href="mailto:mann@4j.lane.edu">mann@4j.lane.edu</a>	

**CLASS LISTS POSTED:** Friday, September 2<sup>nd</sup> at 4:00 on the front windows

**OPEN HOUSE:** Join us for the Back to School Open House, Tuesday, September 6<sup>th</sup> from 2:30 to 3:30

**FIRST DAY OF SCHOOL:** Wednesday, September 7<sup>th</sup> *EARLY RELEASE*  
 Release time for Meadowlark is 1:15. Release time for Buena Vista is 1:30

## ATTENDANCE

Attendance is closely related to success in school. Good attendance includes arriving to school in time to get to class before the bell rings. If your child will be tardy or absent, we would like you to call the attendance line at 334-4898 prior to 9:00 a.m. We will be tracking attendance on a monthly basis and communicating with parents if a student is having a problem with tardiness or absences.



## KEEP THE TRAFFIC FLOWING

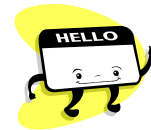
### Traffic Safety

For the safety of all the students and for the convenience of all the families please follow these traffic rules. These rules apply to everyone.

- \*Enter via Queens Way and exit through the back gate onto Norwood. Even if you park in the parking lot by the playground, please exit through the back gate.
- \*If you are the first person to pull up in front of the school for pick up in the front, please pull all the way forward to the corner.
- \*It is fine to form two lines along the front of the building for after school pick up, as long as you stay in or near your car.
- \*When waiting in front of the school to pick up your child after school, **stay in or close by your car.**
- \*If you want to go into the school to pick up your child, park in the west parking lot.
- \*Pull all the way forward when waiting for your child in the front of the school. If a car pulls leaves, please continue to pull forward as far as possible.
- \*If you will be picking your child up in the front of the school, please encourage them to come out quickly.

## NEW FRONT OFFICE SAFETY PROCEDURES

New procedures are in place for entering the building in the mornings. We now have a foyer created by a second set of double doors right at the corner of the BV hallway. This gives us the ability to close off direct access to the halls by locking these doors. These doors will be locked during the school day at 8:25. Any one entering the school must come in through Ruth's office and SIGN IN after that time. You will be issued a badge to wear. These doors will be unlocked at about 2:10 everyday just in time for student release. Don't forget your name badge!



### We're learning right up to the last minute!

To keep down the noise in the hallways the 15 minutes before school is out, we are asking that Meadowlark parents wait in the main hallway right by the cafeteria until the Meadowlark bell rings and then go down the hall way to greet their child. We are asking that BV parents wait outside the front offices in the main hallway until the BV bell rings. We would also appreciate the Kinder parents being very quiet when picking up their kinder child from either the outside or inside door as Buena Vista is still in session.

**AFTER SCHOOL PLANS**



Children are expected to return home after school. If students are planning to go to a friend’s house after school, these plans should be cleared with parents before students come to school. Our phones are extremely busy before and after school, so your help by having children pre-arrange their after school plan is appreciated. Please keep in mind that is no supervision after school hours.

**LUNCHES**



It is our policy this year to not allow students to charge lunches. If they forget their lunch or run out of lunch tickets, they will be given a free cheese sandwich and juice. Tickets can be purchased from the school cafeteria only. Parents can also check balances and purchase online by going to [https://www.sodexoeducation.com/segment 0200/district 5519/enm/Entry2/](https://www.sodexoeducation.com/segment_0200/district_5519/enm/Entry2/) . You will need your child’s student ID number. If you do not know the ID number, please call the school office. No sale of lunch tickets can be conducted through the front office.

Breakfast prices		Lunch prices	
Breakfast full price	\$1.00 daily	Lunch full price	\$1.90 daily
Breakfast reduced price	\$0.30 daily	Lunch reduced price	\$0.40 daily
	Milk price	\$0.50 daily	
	Adult Lunches	\$2.50 daily (please call by 9:00 am to reserve)	
Please see the office staff (Jan or Ruth) to obtain a Free/Reduced Lunch application			

**To Pay Online:**

- 1) Go to: [www.4j.lane.edu](http://www.4j.lane.edu)
  - 2) Click on: Lunch Menus
  - 3) Click on: Pay for Meals
  - 4a) If you have not created an account for your students, click on: Create your Sodexo Education account now! Follow the directions. If you don't know your student's ID number, just type in 999999 for the ID and include your student's name and school.
  - 4b) If you have created an account for your student(s), enter in your User ID and follow the directions.
- FYI: There is a service fee attached to Online Payments of 6%

**Free and Reduced Lunches- It helps us a lot!**

Did you know that the more people we have that qualify for free or reduced lunch, the more federal Title One dollars we receive? If you have not applied for free or reduced lunch, please be sure to talk to Jan or Ruth. Not only do you get free or reduced priced breakfast and lunch, you help our school as well.

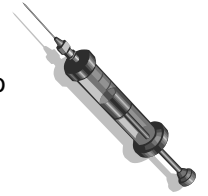
**Meadowlark/Buena Vista 2005-06 Joint Staff**

Principal	Ms. B.J. Blake
Office Staff	Jan Hahn, Office Manager/Secretary
	Ruth Mann, Department Assistant, attendance and records
Cafeteria Staff	Marie Yost, Head cook
	Michelle Gremon
Speech & Language	Rachael Robak
Custodians	Pete Mooers, Head custodian
	Kathy Wiebke, Night custodian
Psychologist	Jessica Hunt
School Nurse	Robin Wellwood

Meadowlark Teachers		Buena Vista Teachers	
Carmen Bayley	Kindergarten	Sarah Knudsen	1 <sup>st</sup> . Spanish
Marilyn Koenig	1 <sup>st</sup>	Margarita Field	1 <sup>st</sup> Spanish
Patrice Cowman	1 <sup>st</sup>	Bea Downes	2 <sup>nd</sup> English
Ginny Heer	2 <sup>nd</sup>	Celia Long	2 <sup>nd</sup> Spanish
Phyllis Ryan	3 <sup>rd</sup>	Joyce Cedarlund	3 <sup>rd</sup> English
Mary Fuller	2 <sup>nd</sup> /3 <sup>rd</sup>	Annie Whitted	3 <sup>rd</sup> Spanish
Sue Harris	4 <sup>th</sup> / 5 <sup>th</sup>	Jamie Myers	4 <sup>th</sup> English
Jen Smith	4 <sup>th</sup> /5 <sup>th</sup>	Mary Hebert	4 <sup>th</sup> Spanish
Dayna Mitchell	Resource Rm. 15	Patsy McFadden	5 <sup>th</sup> English
Maria Kirwin	Spanish Teacher	Martha Colon	5 <sup>th</sup> Spanish
Chris Dobson	Music Specialist	Mario Sagastume	Facilitating Teacher
Gail Schwieger	Title I Teacher/ <b>Coord</b>	Dayna Mitchell	Resource Rm. 15
Robin Longnight	Counselor	Chris Dobson	Music Specialist
<b>Meadowlark Instr.Assistants</b>		<b>Buena Vista Instr. Assistants</b>	
Machelle Cheung Sheryl Kelly Jennifer Nygren Sandra Abramowitz Janice Haven Trisha Egge Tamara Miller, Cafeteria Mary Livermore, Library		Lilliana Foresman (Spanish) TBA (English)	

## IMMUNIZATIONS

The Oregon State Health Division has developed an immunization rule change which went into effect in October, 1990. Students from foreign countries attending (visiting) classes at any grade level will need to have completed certificate of immunization before attending any Oregon school. The child may be fully immunized, in the process of receiving immunization; or have a medical or religious exception.



## MEDICATIONS AT SCHOOL



- ◆ Must come in the original prescription or over the counter container.
- ◆ Parents must sign the state mandated form provided by the office.
- ◆ Changes in dosage require new forms to be filled out and provided to the office.
- ◆ Children are NOT allowed to carry medication unless PRIOR arrangements have been made with the nurse, secretary or principal. This includes asthma INHALERS.
- ◆ The prescription bottle is considered the doctors authorization.

## HOURS OF SCHOOL SUPERVISION

It is important for you to be aware of the hours that there is no supervision of buildings or grounds at Meadowlark and Buena Vista. The school provides supervision only between the hours of 7:45 a.m. and 2:30 p.m., Mon., Tue., Thur., Fri., and 7:45 a.m. to 1:30 p.m. on Wed. There is no playground supervision provided before or after school. Children who are transported need to be picked up immediately after school

## ANIMALS IN SCHOOL



We have several students with severe allergies to animals and we can not allow animals in the school building when parents are dropping off or picking up their children. If a child wants to bring an animal to school for "show and tell," prior plans must be made with the classroom teacher. If it is authorized, the animal must be brought in through the OUTSIDE classroom door.

## LIBRARY NEWS



We would not have a library for our students without volunteers. Mary Livermore is our library assistant, but she is only here long enough to coordinate the wonderful team of library volunteers who do the heart of the work to keep our library running. She may need a little more help than usual getting the library ready, as the library has been used as a storage area during the remodel. In other words, we need you! If you are willing to help, please contact Mary at [livermore\\_m@4j.lane.edu](mailto:livermore_m@4j.lane.edu).

## LOST LIBRARY BOOKS

If a student did not return his/her library book from last year or pay the book fine for the lost book, it will be carried over into this school year 2005-2006. Students who have lost books, will NOT be able to check out a book when they come to the library until the book has been returned or the fine paid.

## WEBSITE ADDRESSES:

Meadowlark is: [www.4j.lane.edu/meadowlark](http://www.4j.lane.edu/meadowlark)  
Buena Vista is: [www.4j.lane.edu/buenavista](http://www.4j.lane.edu/buenavista)

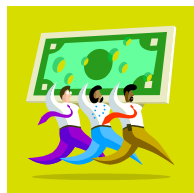


## PARENT HANDBOOK:

One step in the direction of good communication is the development last year of a Parent Handbook. You received a copy of the handbook last year. Please save it to refer to throughout this year. It can also be viewed and/or printed online on either school's website listed above. Please let BJ, Jan or Ruth know if you need a paper copy of the handbook. We will be sending a paper copy home with all Meadowlark Kinders and BV first graders.

## MONEY FOR MINDS:

If you shop at Valley River, be sure to register your receipts at **Money for Minds**. It is an easy way for us to earn money for our school. In the past we have been able to earn as much as \$2,500.



## VOLUNTEERING AT SCHOOL



We encourage parents to volunteer in school. There are many areas of volunteer opportunities available to you. You can inquire with the Parent Organization, classroom teachers or front office staff for more information. Any person volunteering in our schools will need to undergo district-mandated background checks. These forms can be picked up from Ruth Mann in the front office.

## TREATS IN THE CLASSROOM



Parents sometimes want to bring treats to their child's classroom. While this is very much appreciated, keep in mind that foods brought from home must be commercially prepared and wrapped. It is also acceptable to provide whole, washed fruit, such as oranges, bananas or apples. We would like to keep the students refined sugar intake to a minimum, so if you would like to bring food to the classroom, low sugar treats are preferred.

This restriction is necessary in order to protect our students with life-threatening food allergies and also to reduce the chances of inadvertently spreading illnesses such as Hepatitis A, Norwalk Virus, Salmonella, and E.coli. Your cooperation is greatly appreciated!



## PEANUT BUTTER AT SCHOOL

We have several students in our school who are allergic to peanut butter, one for which peanut butter is **life threatening**. It is so serious that if a child eats peanut butter at lunch, **touches** the playground equipment and then the child with peanut butter touches the same equipment, that child can have a life threatening allergic reaction. We ask that you keep in mind the following:

-Please let your child know when you are packing peanut butter or items that contain peanut butter/peanut oil in their lunch, so they know to sit at the peanut butter table. Students who bring peanut butter or items containing peanut oil/peanut butter in their lunch will need to wash their hands before going out to play on the playground equipment.

-Please do not send all class treats to school that contain peanut butter/peanut oil. We appreciate your cooperation with this. Every child has the right to be safe in school, and your support in this matter makes all the difference for several of our students.

## SMART WAYS TO SCHOOL

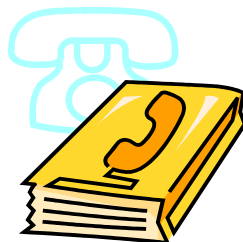
Offers free services to help your student walk, bike, carpool, or take a bus to school.

**Carpool:** Our SchoolPool service connects families who want to carpool to the same school. You'll receive a match list of other registered SchoolPool families whose students live near you. Register online at [www.swts.org](http://www.swts.org) or call 682-6213 to request a form.

**Walk or Bike:** We can help you connect with nearby families at your student's school to form your own travel group. Your group can travel a designated route and pause at pre-arranged places to let more students join the group. Globally, it's called a "walking (or bicycling) school bus." Call 682-6213 to get connected.

**Ride a Bus:** Don't have school bus service?

Call 687-5555 to find the best LTD route for your student. *Smart Ways to School* offers free services to connect families so students can walk, bike, carpool, or take a bus to school. Visit [www.swts.org](http://www.swts.org) or call 682-6213.



✂.....

Eugene Public Schools  
School District 4J, Lane County  
Eugene, Oregon

To: PRINCIPAL at MEADOWLARK / BUENA VISTA SPANISH IMMERSION School(s).

I, \_\_\_\_\_ parent or legal guardian of

\_\_\_\_\_ do not wish School District 4J to release directory information about my child.

\_\_\_\_\_  
Parent or Legal Guardian's signature

\_\_\_\_\_  
Date

Name of child/ren \_\_\_\_\_

\_\_\_\_\_  
Classroom #(s)

\_\_\_\_\_  
Teacher(s)

Please fill out and return to Ruth in the school office by  
October 1, 2005 if you do not want your child included in the  
student directory.

This list does **NOT** include Kindergarten. Parents of Kindergarten students requesting bus transportation will receive a personal phone call from 4J

### Meadowlark Bus Runs

---

Route ID: SH65

Run ID: 267.165

Description:

TO MEADOWLARK ELS

Days: MTWUF-----0009-07-200506-16-2006

updated:08/15/2005

7:03 AM ----- TRANSPORTATION  
7:16 AM ----- ON TURNBULL @ COBURG RD  
7:18 AM ----- ON FRONTIER @ 2515 FRONTIER (APTS)  
7:20 AM ----- ON ANTELOPE @ 530 ANTELOPE  
7:21 AM ----- ON ANTELOPE @ 587 ANTELOPE  
7:22 AM ----- ON WESTWOOD @ OAKWAY (KIDDZ 343-1023)  
7:28 AM ----- ON BREWER @ 1877 BREWER  
7:30 AM ----- ON TARPON @ 1920-1970 CULDESAC  
7:31 AM ----- ON SHILOH @ LEMMING  
7:32 AM ----- ON BREWER @ 1996 CULDESAC  
7:33 AM ----- ON ROCKY @ 2210 ROCKY  
7:34 AM ----- ON ELYSIUM @ 2440 ELYSIUM  
7:37 AM ----- ON ELYSIUM @ 2770 ELYSIUM  
7:45 AM ----- SCHOOL: MEADOWLARK ELEMENTARY

Route ID: SH65

Run ID: 267.365

Description:

FROM MEADOWLARK ELS

Days: MT-UF-----0009-07-200506-16-2006

updated:08/15/2005

2:01 PM ----- TRANSPORTATION  
2:15 PM ----- SCHOOL: MEADOWLARK ELEMENTARY  
2:23 PM ----- ON BREWER @ 1877 BREWER  
2:27 PM ----- ON TARPON @ 1920-1970 CULDESAC  
2:28 PM ----- ON SHILOH @ LEMMING  
2:29 PM ----- ON BREWER @ 1996 CULDESAC  
2:30 PM ----- ON ELYSIUM @ 2104 ELYSIUM  
2:33 PM ----- ON ELYSIUM @ 2440 ELYSIUM  
2:36 PM ----- ON ELYSIUM @ 2770 ELYSIUM  
2:40 PM ----- ON TURNBULL @ COBURG RD  
2:41 PM ----- ON PIONEER PIKE @ 2430 PIONEER PIKE  
2:42 PM ----- ON FRONTIER @ 2515 FRONTIER (APTS)  
2:43 PM ----- ON ANTELOPE @ 530 ANTELOPE  
2:43 PM ----- ON ANTELOPE @ 587 ANTELOPE  
2:45 PM ----- ON WESTWOOD @ 2190 WESTWOOD - KIDDZ #343-1023

Route ID: SH65W

Run ID: 267.W65

Description:

FROM MEADOWLARK ELS

Days: --W-----0009-07-200506-16-2006

updated:08/15/2005

1:01 PM ----- TRANSPORTATION

1:15 PM ----- SCHOOL: MEADOWLARK ELEMENTARY

1:23 PM ----- ON BREWER @ 1877 BREWER

1:24 PM ----- ON TARPON @ 1920-1970 CULDESAC

1:25 PM ----- ON SHILOH @ LEMMING

1:26 PM ----- ON BREWER @ 1996 CULDESAC

1:27 PM ----- ON ELYSIUM @ 2104 ELYSIUM

1:29 PM ----- ON ELYSIUM @ 2440 ELYSIUM

1:31 PM ----- ON ELYSIUM @ 2770 ELYSIUM

1:35 PM ----- ON TURNBULL @ COBURG RD

1:36 PM ----- ON PIONEER PIKE @ 2430 PIONEER PIKE

1:37 PM ----- ON FRONTIER @ 2515 FRONTIER (APTS)

1:37 PM ----- ON ANTELOPE @ 530 ANTELOPE

1:38 PM ----- ON ANTELOPE @ 587 ANTELOPE

1:40 PM ----- ON WESTWOOD @ 2190 WESTWOOD - KIDDZ #343-1023

Route ID: SH69

Run ID: 267.M69

Description:

FROM MEADOWLARK AFTER SCHOOL PROGAM

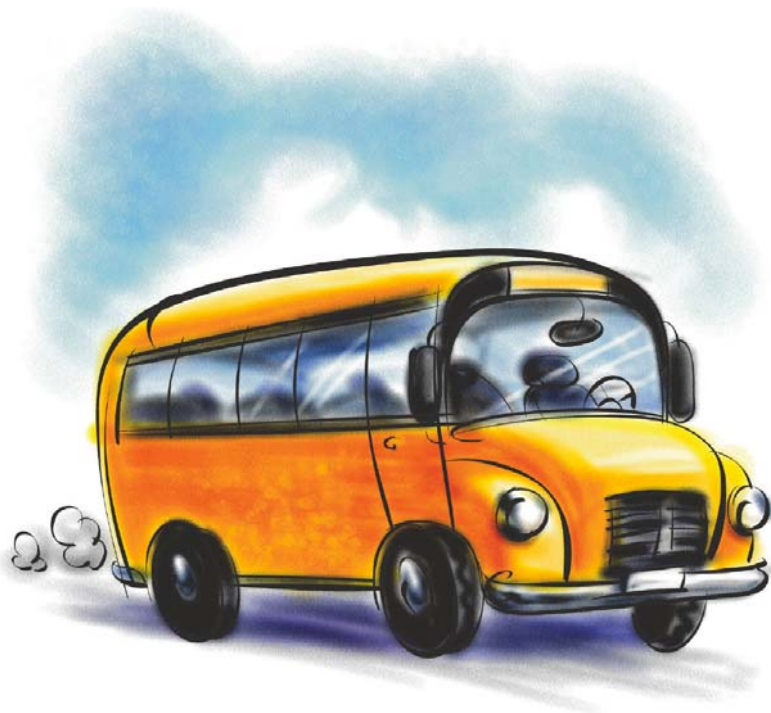
Days: MT-UF-----0009-07-200506-16-2006

updated:08/15/2005

3:10 PM ----- SCHOOL: MEADOWLARK ELEMENTARY

3:13 PM ----- ON BREWER @ 1877 BREWER

3:20 PM ----- ON FRONTIER @ 2515 FRONTIER





## Meadowlark Elementary 2005-2006 Supply List

**ALL Children bring 2 reams of white (BOND) copy paper**

**\*PLEASE BE SURE TO LABEL ALL MATERIALS WITH CHILD'S NAME FOR ALL GRADES**

*NOTE: Please check the classroom list to confirm if your child is in 1, 2, 2/3, 3 or 4/5 grade classroom. Specific brands have been recommended because we have found them to yield superior results.*

### **KINDERGARTEN**

NOTE: DO NOT LABEL items except backpack

4 #2 pencils (Do not Label) Sharpened  
 1 pair of child size scissors  
 1 backpack (12 X 15 or larger)  
 LARGE ENOUGH FOR FRIDAY FOLDER  
label with student's name  
 1 bottle ELMERS glue 7.6 oz.  
 Crayola water color paints

2 large glue sticks  
 1 LARGE eraser  
 1 box of 8 crayons, regular size  
 (only 8 colors and NOT fluorescent)  
 2 reams of white (BOND) copy paper  
 1 box of wet wipes  
 1 set of 12 colored pencils

### **FIRST GRADE**

1 box 24 crayons (or more) regular size  
 2 large boxes facial tissue  
 1 package felt tip markers to be shared  
 2 pocket folders  
 3 Large glue sticks  
 1 Four oz. bottle WHITE school glue  
 1 set PRANG or CRAYOLA water color paints  
 2 reams of white (BOND) copy paper  
 1 school box, approx. 5"x8" NO BIGGER  
 2 dozen SHARPENED plain yellow #2 pencils  
to be shared by the class (DO NOT LABEL)

1 spiral notebook  
 1 1" 3 ring binder (solid color)  
 1 pair student scissors label with name  
 2 LARGE erasers  
 1 backpack, labeled with name  
 1 set full sized CRAYOLA colored pencils  
 1 old short sleeve adult-size shirt (for a painting smock),  
 (labeled with name)



### **SECOND GRADE**

2 dozen AMERICAN or Ticonderoga #2  
 Pencils, sharpened  
 1 pair of FISKAR scissors  
 1 box of 24 (or more) crayons  
 1 box of 12 (or more) CRAYOLA colored pencils  
 1 spiral notebook (wide-ruled)  
 1 LARGE box Kleenex tissue  
 1 School box, no bigger than 5" x 8"

1 backpack  
 2 LARGE erasers  
 1 pocket folder (similar to a PeeChee)  
 1 large glue stick  
 1 set of PRANG or CRAYOLA watercolor paints  
 1 small bottle of white ELMER's glue, 4 oz.  
 1 old adult size short sleeve shirt to be used as painting smock  
 1 set fine tip markers

**PLEASE NOTE: Label everything EXCEPT #2 pencils with child's name. Please DO NOT bring 3-ring binders. Specific brands have been recommended because they work best.**

## Meadowlark Elementary 2005-2006 Supply List (cont)

### SECOND / THIRD GRADE BLEND

- |  |   |
|--|---|
| 2 spiral (wide ruled) notebooks  | 2 LARGE erasers                             |
| 1 pair of fiskars scissors   | 1 backpack labeled with name                |
| 1 box set of 12 crayola colored pencils                                  | 1 small 5" x 8" pencil box                  |
| 1 large box facial tissues   | 1 box of 24 Crayons                         |
| 3 doz. #2 American or Ticonderoga pencils (sharpened) teacher will store | 3 glue sticks                               |
| 1 box (thin) set of 9 Crayola markers                                    | Prang or Crayola water color paints         |
| 1 box (chubby) set of 8 Crayola markers                                  | 1 calculator for 3 <sup>rd</sup> grade math |
| 1 large bottle of Elmers white glue                                      | Please note: Do not bring 3 ring notebooks  |
| 2 reams of white (bond) copy paper                                       | 1 box (chubby) SET OF 8 Crayola markers     |
| 1 package (200 sheets) wide-ruled 3 hole notebook paper                  | 1 ruler                                     |

### THIRD GRADE

- |   |  |
|---|--|
| 1 ruler   | 2 spiral notebooks                                       |
| 1 pair of FISKAR scissors                         | 2 LARGE erasers  |
| 1 box 12 Crayola colored pencils                  | 1 backpack labeled with name                             |
| 1 LARGE box facial tissue                         | 1 small 5" x 8" pencil box                               |
| 3 doz #2 pencils (sharpened) (Teacher will store) | 1 box of 24 crayons                                      |
| 1 box (thin) Crayola markers                      | 1 calculator for 3 <sup>rd</sup> Grade Math              |
| 1 box (chubby) Crayola markers                    | 1 LARGE bottle of Elmers white glue                      |
| 2 reams of white (BOND) copy paper                | 3 glue sticks  |
| Prang or Crayola water color paints               | <i>Please Note: <u>DO NOT bring 3 ring notebooks</u></i> |



1

*Please note: There is only room for the items listed above. Any items sent to school that are not on this list, will be sent home.*

### FOURTH /FIFTH GRADE BLEND

*DO NOT LABEL anything. Items will be kept in the class project area.*

- |   |                                     |
|---|-------------------------------------|
| 3 dozen American or Ticonderoga #2 pencils  | 3 Glue sticks                       |
| 2 package (200 sheets) of 3 hole, WIDE-RULE notebook paper  | 1 box of 9 (thin) Crayola markers   |
| 1 set of 5 notebook dividers  | 1 box of 8 (chubby) Crayola markers |
| 1 View Binder, 1 1/2 inch rings, with pockets inside both covers*<br>(NO ZIPPERS) (available at Bi-Mart) 1 1/2 to 2 " | 1 pair FISKAR student scissors      |
| 1 heavy duty mesh, zippered binder pocket   | 1 set of 12 colored pencils         |
| 1 backpack  | 1 large box of facial tissue        |
| 2 reams of white (BOND) copy paper  | 1 inexpensive calculator            |
| 1 large eraser  | 1 ruler                             |
| 2 wire spiral notebooks   | Gym shoes for PE class**            |
| Prang or Crayola Water color paint  | Soprano Recorder***                 |

*PLEASE NOTE: There is only room for the items listed above. Any items sent to school that are NOT on this list, will be sent home.*

*\*\*It is not necessary to buy a separate pair of shoes for PE classes. Any soft-soled shoes that WON'T leave black marks on the gym floor are suitable. The emphasis is on safety, so the shoes should have proper foot support and good traction. Students need to wear these shoes on PE days.*

*\*\*\*Soprano Recorders are on sale for \$7.50 from the music teacher in the cafeteria during the Open House*

## Buena Vista School Supply List for 2005-2006

For **First** grade please send supplies in a bag with your child's name on the bag.

For **Second** and **Third** grades please send supplies for English and Spanish classes in two separate bags clearly labeled English and Spanish with your child's name on the bags.

**First, Second and Third** graders will share supplies. Do not mark individual items unless indicated by an \*.

Please do not send any fancy materials or extra items. Specific brands have been recommended because we have found them to yield superior results. Please check with the individual teacher if you have questions regarding brands.

**A backpack or bookbag and gym shoes are necessary FOR ALL STUDENTS.**

Supplies may need to be replenished throughout the year.

### **First Grade**

2	Ream	White copy paper
4	small	Glue sticks
1	16 count	Markers-thick line(2 pkgs of 8 count okay)
1	8 count	Markers-thin line
1	24 count	Colored pencils
1	24 count	Crayons
4		*Plain plastic pocket folders (One each of red, yellow, blue & green)
2	12 count	<b>Sharpened #2</b> pencils
2		Black Flair type felt tip pen
1	pkg of 20+	Eraser pencil caps
2	80+ count	Baby wipes
2		Large box facial tissue
1		*Mini Digital Video cassette
2	1" thick	*3-ring binders with pockets. One black, one white.
1	25 count	Oil pastels. Not extra soft, any brand.
1	skein	Yarn, any color. Plain or multi-colored.

**\*Please label these items only w/first & last name**

### **Second Grade English**

1	Ream	White copy paper
2	8 ounce	Glue (4-4oz. Okay)
1	8 count	Markers-thick or thin
1	24 count	Colored pencils
1	24 count	Crayons
2		Rigid plain plastic pocket folders
1	12 count	<b>Sharpened #2</b> pencils
1		Erasers, such as Pink Pearl
1	80+ count	Baby wipes
1	25 count	Pentel oil pastels
1		Large box facial tissue
1	50+ page	Spiral notebook (plain cover, wide ruled, spiral on side)
1		Pair of good scissors
1		Rigid plastic ruler w/inches & centimeters
2	1" thick	3-ring binders w/pockets, different colors

### **Second Grade Spanish**

1	Ream	White copy paper
4	small	Glue sticks
1	8 count	Markers-thick line
1	12 count	Colored pencils
1	24 count	Crayons
3		Rigid plain plastic pocket folders
1	12 count	<b>Sharpened #2</b> pencils
2		Erasers, such as Pink Pearl
1	package	Hole reinforcements
1	25 count	Pentel oil pastels
1		Large box facial tissue
2	50+ page	Spiral notebook with no perforation
1	5x8x2	Plastic box, not bigger or smaller.
1		Pair of good scissors
1		Rigid plastic ruler w/inches & centimeters
1	1" thick	3-ring binder w/pockets

### Third Grade English

1	Ream	White copy paper
1	100+ sheet	Wide-ruled notebook paper
1	8 count	*Markers-thin line
1	12 count	*Colored pencils
3		Plain pocket folders w/pockets
2	12 count	<b>Sharpened #2 pencils</b>
2	large	Erasers, such as Pink Pearl
1		Large box facial tissue
1	50+ page	Spiral notebook (plain cover, wide ruled, spiral on side)
1	6 or J	Crochet hook
1	skein	Yarn-any color, plain
1		\$1.00 for purchase of take home folder

**\*Please label these items only w/first & last name**

*3rd graders also need a soprano recorder. Recorders can be purchased for 7.50 from the music teacher. Please read information for all students at the top of page one.*

### Third Grade Spanish

1	Ream	White copy paper
2	100+ sheet	Wide-ruled notebook paper
1	8 count	Markers-thick or thin
1	24 count	Colored pencils
4		Plain plastic pocket folders
2	12 count	<b>Sharpened #2 pencils</b>
2	large	Erasers, such as Pink Pearl
1	80+ count	Baby wipes
1	small	Covered pencil sharpener
1		Black Flair type felt tip pen
2	large	Glue sticks
1	8 ounce	Glue (2-4 oz. okay)
1	8 count	Water colors
1	24 count	Crayons
1	25 count	Pentel oil pastels

### Fourth Grade

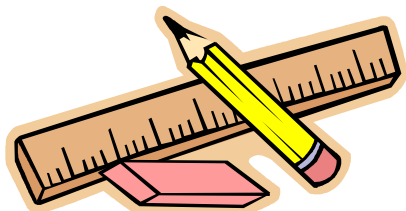
2	Ream	White copy paper
2	100+ sheet	Wide-ruled notebook paper
1	10 count	Notebook dividers w/plastic tabs
1	1 package	*Hole reinforcements
3	small	*Glue sticks
2	12 count	*Colored pencils
2	24 count	*Crayons
3	12 count	<b>*Sharpened #2 pencils</b>
4		Red ballpoint pen
3		Black Flair type felt tip pen
1	large	*Eraser, such as Pink Pearl
1	small	*Covered pencil sharpener
1		*Plastic or canvas zippered pencil pouch
2		Large box facial tissue
2	50+ page	*Spiral notebook (plain cover, wide ruled, spiral on side)
1		*Rigid plastic ruler w/inches & centimeters
1	2-3" thick	*3-ring binder, metal rings, inside pockets or clips. No velcro or trapper keepers.
1		*Inexpensive calculator
1		*Recorder
1		\$1.00 for purchase of take home folder

### Fifth Grade

2	Ream	White copy paper
2	200+ sheet	Wide-ruled notebook paper
1	9X7	Composition notebook
1		Pair of good scissors
2	large	Glue sticks
1	12 count	Colored pencils
1	8 count	Markers-thick line
3	12 count	<b>Sharpened #2 pencils</b>
1	25 count	Pentel oil pastels
2	large	Erasers, such as Pink Pearl
10		Plain color folders with pockets
1		Plastic or canvas zippered pencil pouch
2		Large box facial tissue
1		Rigid plastic ruler w/inches & centimeters
1	2-3" thick	3-ring binder, metal rings, inside pockets or clips. No velcro or trapper keepers.
1		Inexpensive calculator
1		*Recorder
1		\$1.00 for purchase of take home folder

**\*Please label these items only w/first & last name**

*If your 4th or 5th grader still has the recorder they used last year no additional purchase is necessary.*



**2005-2006 Event Scheduling for BOTH Meadowlark and Buena Vista**

Labor Day.....	September 5
All school Open House.....	September 6
First Day of School.....	September 7
PBS Kick-off Assembly.....	September 16
Pictures.....	October 11
State Wide School Inservice.....	October 14
Fall Parties.....	October 28 or 31
Conference-early release.....	November 7, 8, 9
No school.....	November 10th
Veteran's Day (no school).....	November 11
Picture Retakes.....	November 15
Spirit Week.....	November 21, 22, 23
EBS Movie Incentive.....	November 23
Thanksgiving Vacation (no school).....	November 24, 25
Book Fair.....	December 1-7
All Choir Performance.....	December 6 @ 7:30
Winter Break (no school).....	Dec. 19-Jan. 2
Staff Development day (no school).....	January 3
School resumes after Winter Break.....	January 4
Martin Luther King Jr. Birthday (no school)	January 16
End of Semester.....	February 2
Semester Grading Day (no school).....	February 3
Presidents Day (no school).....	February 20
Activity Day.....	March 24
Spring Break.....	March 27-31
Staff Development day (no school).....	April 3
Staff Development day (no school).....	April 14
Children's Choral Festival.....	April 18
Jog-a-thon- MI/BV both.....	???????
All Choir performance.....	May 23
Spring Fling.....	May 23
Memorial Day.....	May 29
Grading and conference day (no school)...	June 9
Teacher Appreciation Luncheon.....	June 9
Field day - Last day of school.....	June 16
Grading Day.....	June 19

**Updated 8/17/05**





**WORK STUDY STUDENT NEEDED:**

We need YOUR help finding an office work study student. This is the first year we have not been able to find a high school student as a school office work study student. If you know of a **high school junior or senior** who is willing to work, has a free schedule from 1:00 to 4:00 daily, is reliable and not tied down with extra curricular activities, let Jan Hahn or BJ Blake know right away. Our number is: 687-3368

**The rewards are:**

- ◆ MONEY (This is a paid work experience.)
  - ◆
- ◆ Working at a front desk and gaining confidence and skills
  - ◆
- ◆ Job reference on completion of year
  - ◆
- ◆ School Credits/Grade
  - ◆
- ◆ Job related experience that looks great on a resume!
  - ◆
- ◆ Working with terrific people!
  - ◆
- ◆ Feeling needed!!!!!!!