

Toucan Times

— Edison Elementary School: "A Colorful Place to Learn" —

SEPTEMBER 2004



PRINCIPALLY SPEAKING

By Tom Maloney

Dear Edison Families:

I hope you are having a wonderful summer. As I write this letter on August 18, I have officially been the principal of

Edison for a grand total of three days and it already feels like my home away from home. Vicki and all of the staff and parents I have met so far have been gracious and very welcoming. What I appreciate most is the fantastic job Janis did of orienting me to Edison school. She went to great lengths to make sure that we are organized and that I am able to step right in and continue to provide the support and leadership the Edison staff needs to provide a strong academic program in a safe and caring environment.

I am looking forward to becoming an active member of the Edison community. Last spring Janis introduced me to the Site Council and the Parent Advisory Council. It didn't take long to recognize the passion and commitment Edison parents have for their school. I am also impressed with the Edison parents "Can Do" attitude. Fundraising, the *Toucan Times* and the Parent Student Handbook are just a few examples of Edison parents making valuable contributions to their school.

I want to welcome Andrea Engelmann and Janine Zimmer Berg to Edison school. Andrea will join Carrie Ann, Karen and Jenny on the 4/5 team. Janine will join Robyn and Kathleen Rockwell, who are job sharing, on the 3rd grade team. In addition Jen Bergland will move from her reading coordinator position to kindergarten. Lisa and Jen are going to make a great kindergarten team. All of the new

staff members, myself included, are looking forward to continuing the rich tradition of Edison school.

Please feel free to stop by, or contact Vicki to set up an appointment, so that we can get to know each other or to discuss issues related to your child or the school in general. I hope to see you at the open house and picnic on Sept. 7; however what I'm really looking forward to is the first day of school on the 8th. I can't wait to meet your children. I have the feeling it is going to be a fantastic year at Edison.

Take care and enjoy the warm summer weather.

Tom

Volunteers Needed!



Here's an easy way to spend time at Edison and feel connected to what is going on at school—Volunteer!

The following positions need volunteers:

Health Screening—help give vision tests at this once-a-year event.

Head Lice Checks—happens once a month in the classrooms.

Health Room—fill in when Edison staff are on lunch break.

Recess Volunteers—hang out on the playground with students.

5th Grade Celebration—help make the end of the year special for 5th grade students.

SEPTEMBER 2004 CALENDAR

- Mon., Sept. 6 **Labor Day, Holiday, No School**
- Tues., Sept. 7 **Edison Family Picnic and Open House**
 5:30-6:00p.m. New student & family orientation. In the Cafeteria.
 6:00-6:30p.m. Open House for new and returning families.
 6:30-8:00p.m. Family Picnic for all Edison families. Bring your own picnic dinner, beverages and utensils.
- Wed., Sept. 8 **First Day of School**
 8:15a.m.-1:00p.m. First day of school/early release, Grades 1-5.
 8:15a.m.-Noon. First day of school, Gr. K –half the class A-N attends.
- Thurs., Sept. 9 8:15a.m.-2:35p.m. Regular schedule, Grades 1-5.
 8:15a.m.-Noon. First day of school, Gr. K–half the class O-Z attends.
- Fri., Sept. 10 **Regular Schedule/Friday Friends**
 8:15a.m.-2:35p.m. Regular schedule, Grades 1-5.
 8:15a.m.-Noon. Gr. K students.
ABC's All-School Assembly, Gr. K-5
 8:30a.m. in the Gym
- Mon., Sept. 13 **Grade 4/5 Study Hall begins**
- Tues., Sept. 14 **Site Council Meeting**
 3:00p.m.-5:00p.m. in the Staff Room
- Wed., Sept. 15 **Harrassment/Discrimination/Bully School Assembly**
 8:30a.m. Grades 2/3
 9:00a.m. Grades 4/5
- Tues., Sept. 21 **Parent Council Meeting**
 7:00-9:00p.m. in the Library
- Thurs., Sept. 23 **K-1 Curriculum Night**
 6:30p.m. Grade K in the Music Room
 6:30p.m. Grade 1 in classrooms
 (Childcare in the library, \$1.00 per child)
- All-school Practice Fire Drill**
- Tues., Sept. 28 **4/5 Curriculum Night**
 6:30p.m. Grades 4/5 in classrooms
 (Childcare in the library, \$1.00 per child)
- Picture Day**
 in the cafeteria
- Thurs., Sept. 30 **2-3 Curriculum Night**
 6:30p.m. Grade 2 in classrooms
 7:30p.m. Grade 3 in classrooms
 (Childcare in the library, \$1.00 per child)
- Fri., Oct. 1 **Student Health Screening**
 8:30a.m.-11:45a.m. in the Gym

Edison's Behavior Guidelines



act safely



be responsible



caring & respectful

Eugene Family YMCA Child Care Fun Club

Eugene Family YMCA offers childcare for after kindergarten and after school at the YMCA on Patterson. The YMCA will pick up students from Edison. They offer fun daily activities and go on monthly field trips and swim in a safe and secure environment. The YMCA has a state certified program and spaces are limited. For more information, please call 686-9622 or on the web at www.eugeneymca.org.

STUDENT HEALTH SCREENING

By Joan Narin



The annual Edison Health Screening will take place on Friday, Oct. 1, 2004, from 8:30 to 11:45 a.m. The health screening includes a dental check-up by Dr. Carolyn Cantrell (an Edison parent) and a distance-only vision check. Many parent volunteers are needed to assist in this school-wide event. This is a great way to meet the students at Edison and many of the wonderful Edison parents. Call Joan Narin to volunteer at 687-0784.

MEET THE STAFF AT EDISON ELEMENTARY

OFFICE



Vicki Boudreaux
Secretary

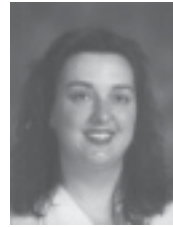


Tom Maloney
Principal

SUPPORT



John Backer
Day Custodian



Stacey Jones
Night Custodian



Barbara Miller
Head Cook



Bridget Walker
Kitchen Assistant

INSTRUCTIONAL ASSISTANTS



Cheryl Burke
Instruct. Assistant



Deborah Dailey
Instruct. Assistant



Janice Peebles
Instruct. Assistant



Tana Posey
Instruct. Assistant



Ayanna Moriguchi
Family Transition
Coordinator

SPECIALISTS



Leasa Fox
Resource Rm., Rm. 15



Frank James
Physical Ed, Gym



Maurya Kaarhus
Music, Rm. 3



Pat Kolb
Speech/Language



Nancy Reiter
School Psychologist

CLASSROOM TEACHERS



Jennifer Berglund
Grade K, Rm. 16



Lisa Fragala
Grade K, Rm. 17



Debbie Greene
Grade 1, Rm. 19



Terry Martin
Grade 1, Rm. 18



Linda McCarthy
Grade 2, Rm. 12



Nancy Whitfield
Grade 2, Rm. 11



Robyn Hagg-Dickens
Grade 3, Rm. 13



Kathleen Rockwell
Grade 3, Rm. 13



Janine Zimmer-Berg
Grade 3, Rm. 14



Andrea Engelmann
Grade 4/5, Rm. 1



Karen Johnston
Grade 4/5, Rm. 4

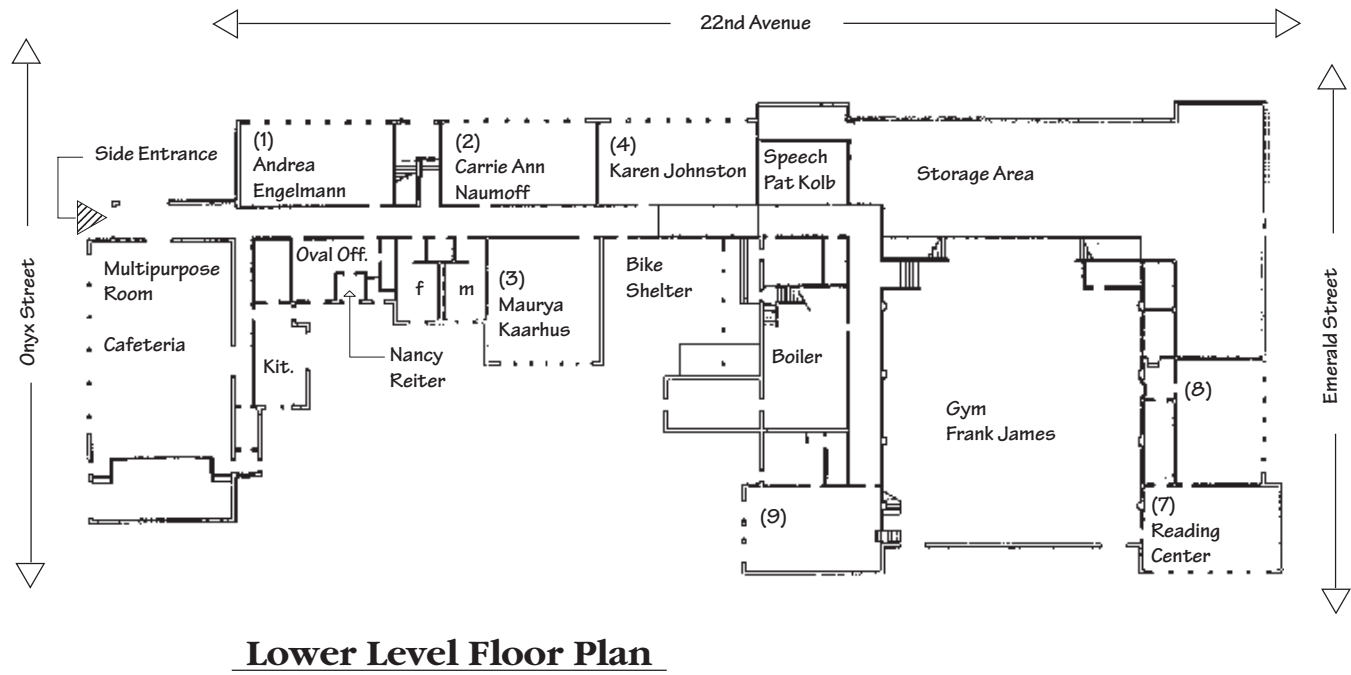
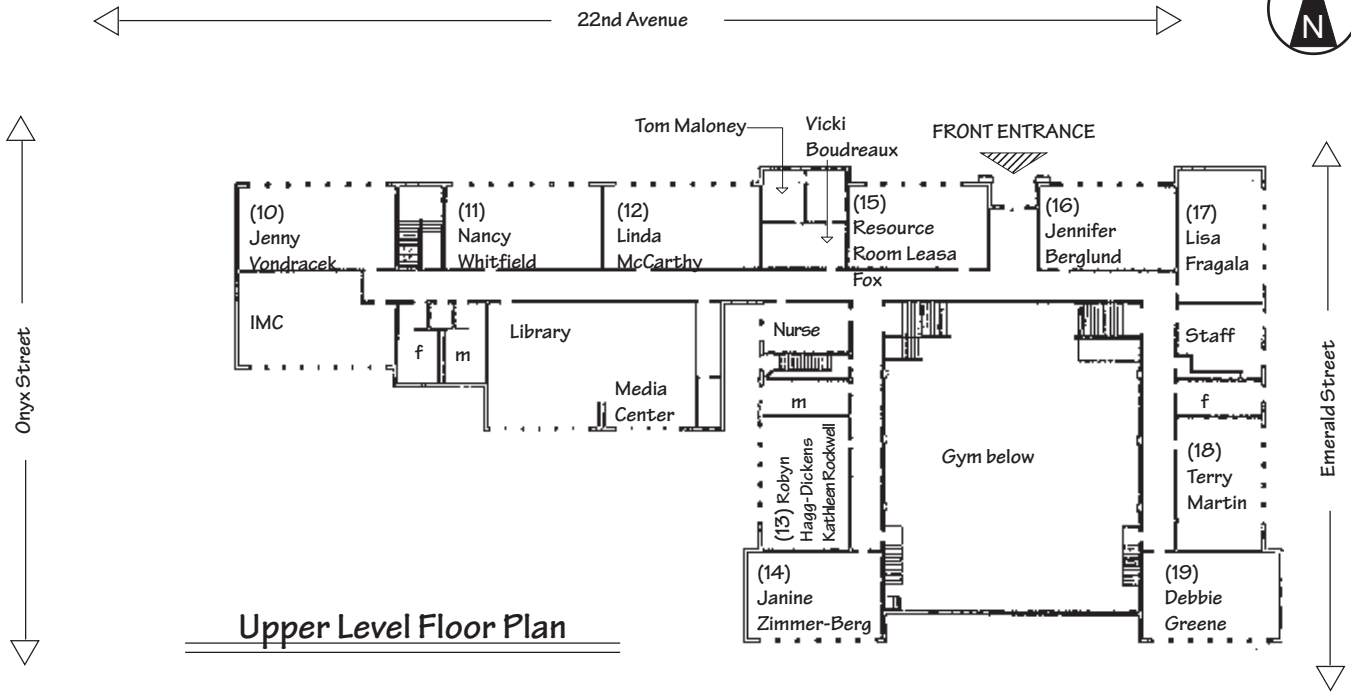


Carrie Ann Naumoff
Grade 4/5, Rm. 2



Jenny Vondracek
Grade 4/5, Rm. 10

EDISON SCHOOL FLOOR PLANS



EDISON WELCOMES FOUR NEW TEACHERS

Get used to seeing a few new faces in the hallways this year. In addition to our new principal, three new teachers will be joining the ranks of the quality faculty at Edison.



Janine Zimmer-Berg is replacing Jan Golick as a third grade teacher. Janine comes to Edison after a one-year stint as a fourth grade teacher at Fox Hollow Elementary School, where she was replacing a teacher on leave for a year. Prior to that, she completed teaching

practicums as part of her Masters of Education program at the UO at both Fox Hollow and Lorane elementary schools. Janine received her masters in 2003. She completed a four-year long teacher education program in Germany, with a focus on elementary education.

"I am excited to share my experiences I gained in different cultural and linguistic backgrounds with the students at Edison," says Janine.



Andrea Englemann will join Edison as a 4/5 teacher, replacing Karen Forward. Andrea has 15 years experience as a teacher, from second grade to high school English to several years of middle school. Last year she taught fifth grade at Patterson Elementary School in Eugene and says that the upper

elementary grades are her favorite. "Kids this age are becoming very capable, independent learners and are open and enthusiastic," Andrea says.

Andrea has three children who keep her busy and she enjoys dancing, singing, swimming and running. She also attends local art performances and enjoys bringing drama, movement and music into the classroom.



Many students are familiar with **Jennifer Berglund**, Edison's new kindergarten teacher. Jennifer was hired last year as Edison's Reading Coordinator, helping those students in the primary grades who needed a little extra reading attention.

Jennifer has been a teacher at the preschool, kindergarten and first-grade level since 1991. She's taught primarily at private schools in Colorado and Massachusetts. Her position at Edison was her first job in Oregon. Jennifer holds a bachelor of arts degree in psychology from Dennison University in Granville, Ohio, and a master's in Child Development from Tufts University in Cambridge, Massachusetts.



Kathleen Rockwell, who taught Spanish at Edison for the past three years, will be team-teaching third grade with Robyn Hagg-Dickens. Kathleen's teaching experience spans Kindergarten through fifth. This coming year will mark the third time that she's taught grade three.

Aside from an academic background in education, she has training in special education and Waldorf education. This past summer she attended a workshop called *The Fragile Brain* and looks forward to implementing "brain friendly" strategies into her teaching. Welcome, Kathleen, to your new position at Edison.

GOOD NEWS: SPANISH LANGUAGE INSTRUCTION TO CONTINUE AT EDISON!

Okay...not in the same way as before, but pretty darn close! Here's the scoop: The City of Eugene Recreation Department will offer two levels of after-school Spanish instruction at Edison for students in grades one through five beginning this fall. Based on the results of the survey we conducted last spring, we think that there will be enough interest to fill two beginner classes (for grades one through three) and one advanced class (for grades three through five). The classes will be offered Monday, Tuesday, and Thursdays after school for one hour. You can find more specific information about the classes, including cost and how to register, in the fall City recreation guide, due to be mailed soon.

So what about Kindergarten? Pam Dillehay, a gifted local Spanish instructor, has agreed to teach

two separate 45-minute long classes to Kinders from 12:05 - 12:50 p.m. on Tuesdays and Thursdays. The classes will have a maximum enrollment of 10 students; however, Pam has agreed to add a third class (on Mondays) if interest warrants. This is how Pam describes her courses:

We sing, play cooperative games, talk with each other, learn useful words and phrases and hear stories. As your child's vocabulary builds, we make up fun stories in class. Your child will receive handouts in Spanish and English of stories, booklets, song lyrics and vocabulary.

The cost is \$70 for 10 weeks of classes. Scholarships will be available. Contact Pam directly to register your child. Her phone number is 343-6332; e-mail is pdillehay@earthlink.net.

TALENTED AND GIFTED (TAG) SERVICES

By Tom Maloney

The Oregon Talented and Gifted Education Act provides for the identification of K-12 intellectually gifted or academically talented students who have met identification criteria of 97 percent on either a nationally normed test of mental ability or an achievement test in reading and/or math. In addition, the criteria for identifying TAG students may include behavioral, learning and/or performance information.

The referral process is the first step in the identification of TAG students. Referrals come from a variety of sources including: Teacher and other staff nominations, parent/guardian nominations, and school nominations based on cumulative records, standardized test scores and other performance data. The referral/nomination process is welcome at Edison at any time during the year and may originate from any of the above sources. If a parent is interested in making a referral, contact your child's teacher to request a Parent Referral form for TAG testing. Upon completing the form, return it to the classroom teacher or turn it in to the office. The parent referral

will be given to the school psychologist who will arrange for testing if testing data is not already available. If the student is a K-2 student, the referral will be sent to the Instruction Dept. at the district level to be assigned to a psychologist. Once assessment result become available, a TAG team consisting usually of the classroom teacher, TAG coordinator, and principal will decide on eligibility. Parents will be notified of the results. The primary job of TAG services is instruction of each TAG student across curricula at each child's demonstrated level and natural pace of learning. Instruction and services are provided within the classrooms with a variety of teaching strategies and enriching opportunities. All TAG identified students will have a TAG plan developed annually.

For questions regarding our TAG services, the referral process, or identification, consult your child's classroom teacher, or the principal. You can also request to review a copy of our *Handbook for Parents of Talented and Gifted Students*, or our *Tag Building Plan*.

EDISON STUDENTS JOG 1150 MILES!

by Peggy Hinsman



The 24th Annual 2004 Edison Jog-a-thon (held in May, 2004) was a huge success and was fun for Edison students, staff and families. The whole school ran together for an hour at the South Eugene High School track, completing as many laps as possible. The students' enthusiasm and efforts were impressive: these athletes ran over 4,600 laps! As former principal Janis Swan said, "That's more than 1150 miles, or the equivalent of running from here to Phoenix, Arizona!"

Hard working runners were cheered on by teachers and camera-toting family members. We finished the event with volunteers handing out popsicles and pewter medals to every student.



This tradition is about much more than fund raising, but thanks to the commitment and generosity of volunteers, students, neighbors, families, businesses and a dedicated staff, the 2004 Jog-a-thon raised over \$16,000. This support will contribute to continuing our music, PE, and other valued school programs.

Here's a big THANK YOU to all of you who helped in any way! We especially want to thank the Edison staff for making this event possible. Thanks also to all the classroom volunteers for walking the



students to and from the field, providing tables, marking laps, managing the water bottles, etc. A big pat on the back to all the family members who came to the event and encouraged the students. Much appreciation to the following volunteers and



contributors to this event: Deborah Chapman, Sandy Glaudin, Eryn Gregory, Carey Hancock, Peter Peterson, Market of Choice, Michelle Mikkelsen, Sarah O'Dell, Gary Powell, Prince Puckler's, The Tinwoodsman Pewter Company. And last, but certainly not least... **Kudos to the Kiddos!**

See you at Jog-a-thon 2005! It's never too early to start training...



THE 2003-04 CAMPAIGN BROUGHT IN \$58,000!

Many thanks to the many families that helped Edison EEF raise approximately \$58,000 for the coming school year. These funds will support Music & PE, maintain current class sizes and support other programs at Edison. Please keep the generosity flowing during the '04-'05 school year!



Thanks to East 19th Street Cafe

Edison's last Restaurant Night in May was a

huge success. Because of the many patrons at East 19th Street Caf on May 24th, and the generosity of McMenamin's donating 50% of their sales, we raised \$1,461.72 that evening! We look forward to scheduling this event again next May, along with the same gorgeous weather, and will encourage East 19th to have more staff on hand. Thanks once again for supporting Edison!

What is Edison EEF?

You may be familiar with the Eugene Education Fund, also known as EEF, which is a non-profit organization that works to financially support the Eugene School District 4J via donations from the public. But what is "Edison" EEF?

Edison EEF is a committee of Edison parents that raises funds specifically for Edison School. At the beginning of each school year, the committee sets a fund raising goal for the following school year - so, each year we're raising funds for the following school year. The committee coordinates several opportunities for families to donate - through direct donations, Kid's Night Out, Edison Restaurant Nights, Valentine Family Night and Silent Auction, etc. The fund raising achieved by the Edison EEF committee, through the support of the community, has allowed our school to continue to offer music and PE, maintain current class sizes and support

other educational programs at Edison.

Funds raised by Edison EEF are directed through the Eugene Education Fund. 95% of the total donations return to Edison, while 5% go toward an equity fund managed by EEF. Any Eugene 4J school can apply for an EEF equity fund grant and Edison has received one of these grants each year for the past three years.

Parent involvement in Edison EEF is essential - not only do we count on your donations, but we also need volunteers to help with fund raising events. Please complete the form below and let us know how you'd like to get involved. Any questions about Edison EEF? Feel free to call one of the co-chairs: Peggy Hinsman (684-0076) or Gary Powell (683-6503). Edison EEF currently includes: Susan Daniell, Eryn Gregory, Peggy Hinsman, Tom Maloney, Gary Powell, Sarah O'Dell, Rick Varnum, Gayle Warren and Jayman Yi.

----- Cut here and drop off at the Edison office -----

Yes! I'd like to assist Edison EEF by (check all that apply)...

- Joining the Edison EEF committee
- Helping to stuff/label envelopes, etc.
- Helping with the Valentine Family Night/Silent Auction
- Helping with Kids Night Out
- Helping with Edison Restaurant Nights
- Helping wherever needed
- Other _____



Name _____

E-mail _____

Telephone _____

daytime evening



EDISON SITE COUNCIL

By Seve Johnston

The 2003-2004 school year was very productive in Edison's Site Council. Former Principal, Janis Swan concentrated on our School Improvement Plan and creating good working and learning opportunities for staff development days. Frank and Kirsti continued to develop and implement Edison's Technology Plan, resulting in more students and staff effectively using our computer lab. Deborah addressed parent questions and concerns in the *Toucan Times* Math Corner. Kathleen and others put a lot of work into our Spanish Program, and although they could not solve our funding problem, they continue to work on ways to keep Spanish language and culture in our school. Finally, the Edison Anthology, *Toucan Tales*, was conceived and created as a way to encourage student writing. Karen, Debbie and Seve headed this huge staff team effort, the first of many compelling editions.

Our new year brings changes in membership. Dick Pfunder will return as a parent representative and will be joined by Michael Sheehan, long-time Edison parent with his last child going into 4th grade. Staff members include Tom Maloney, principal, Lisa Fragala, kindergarten teacher; Debbie Greene, 1st grade teacher; Kathleen Rockwell, 3rd grade teacher; Carrie Ann Naumoff, 4/5 grade teacher; and Deborah Dailey, instructional assistant. Thank you to all members who have agreed to serve. We look forward to a great year!

USE SCRIP—MAKE MONEY FOR EDISON

By Kathi Wiederhold

Using scrip is an easy way to make money for Edison at no cost to you. The merchants donate a percentage of the sales to the school. That's all there is to it. Choose eScrip, the Albertson's Preferred Savings Card, or paper scrip—or all three, like we do in our family.

Connect with your Edison scrip staff—Laurel Anderson and Kathi Wiederhold, at the before-school picnic, in the front hall on many school mornings, at curriculum nights, and at school events like pizza nights and the silent auction. We can help you with eScrip registration, getting an Albertson's Preferred Savings card, or sell you hard copy scrip.

eScrip

It's quick. It's easy. It's painless. All you need to do is register your credit cards, shop as usual, and the earnings will automatically go to the school of your choice. Look on page 11 and 12 of this issue of *Toucan Times* for Frequently Asked Questions and a sign-up form. Send an eScrip registration form to the grandparents with the next batch of kid photos—they can register their cards, too!

Paper Scrip

Purchase paper scrip for Newman's, Safeway, Sundance, and Mucho Gusto. Use it just like cash. Use scrip for gifts—great for those loved ones on limited incomes!

Albertson's Preferred Savings Card

Albertson's is now using their Preferred Savings Card to donate funds to schools. It replaced the Community Partner Card on August 1, 2004. There are 3 ways to get a Preferred Savings Card: Stop by the store; mail the form below; or visit www.albertsons.com and click on "In the Community", then click on the Community Partners logo link. Once you log in, click on "Sign me up".

Fill out this form and mail to:

Community Partners Program
Headquarters
P.O. Box 193
Bethel Park, PA 15102-0193



For program information, go to
www.albertsons.com

Please Print Clearly

Edison Elementary School

49000100255

Your Preferred Savings Card#

Your First Name

Last Name

Phone# (for verification purposes, if necessary)

2003-2004 PARENT COUNCIL MEMBERS

(Grade of child in parentheses) * co-facilitators

Jerry Bridges (5)	jerrybridges@ipkoke.com	345-9036
Karen Cooper (2)	karenc@darkwing.uoregon.edu	349-1049
Paul Curtis (2,5)	pcdesigninc@comcast.net	344-7365
Leita Dzubay (2)	dzubayl@hotmail.com	302-1607
Dee Eitzwiler (4)	deestudio@continent.com	344-5559
Cary Hancock (3)	caryhancock13@hotmail.com	345-2180
*Kirsten Haugen (1,3)	khaugen@uoregon.edu	434-2416
Mary Beth Hepp-Elam (4) ..	hepptone@yahoo.com	686-4840
Denise Jessup (K,4)	jessupvarnums@comcast.net	683-7641
Stephanie Jocums (1)	sjocums@comcast.net	343-6573
*Hillary Johnson (2)	htjohnson@comcast.net	345-5526
Miles Johnson (4,5)	milesj@kingstate.com	485-3990
Lisa King (1)	kingl@lanecc.edu	683-8025
Robin Latimer (4)	rlatimer@summitproperty.us	485-1254
Rosette Lattimore (3)	rosette_7@hotmail.com	344-5275
Paula Levinrad (4)	PLevinrad@qwest.net	345-5411
Stephanie Lonergan (K,2) ..	lonergan@darkwing.uoregon.edu ..	344-1253
Tom Maloney (Principal)	maloney@4j.lane.edu	687-3284
Nancy O'Brien (3)	nanobrien@hotmail.com	687-9393
Dick Pfunder (3,4)	karenpfunder@hotmail.com	485-6613
Victoria Robinson (2)	victoria@uoneuro.uoregon.edu	686-1937
Mindy Schlossberg (1)	Mindy33s@yahoo.com	484-3305
Heather Serafin (1)	Thegoddessair@yahoo.com	485-1535
Michael Sheehan (4)	msheehan@peacehealth.org	485-7205
Beth Stein (K)	bstein@teleport.com	242-0798
Mickey Stellavato (1,2)	mickey@darkwing.uoregon.edu	687-9718
Jen Thoennes (K)	pighart@hotmail.com	345-4970
Lisa Vertulfo (4,5)	lisav@holtintl.org	345-0261
Michael Wilde (K)	wildeduc@cmc.net	343-0646
Lynette Williams (2,4)	lynettw@willamette.net	485-3960

2004-2005 SITE COUNCIL MEMBERS

Deborah Dailey (instructional assistant)
Kathleen Rockwell (teacher)
Debbie Greene (teacher)
Lisa Fragala (teacher)
Carrie Ann Naumoff (teacher)
Tom Maloney(principal) maloney@4j.lane.edu. ... 687-3284
Dick Pfunder (parent) karenpfunder@hotmail.com 485-6613
Michael Sheehan (parent) msheehan@peacehealth.org 485-7205

VOLUNTEER ACTIVITIES COORDINATORS

Head Volunteer Coordinators	Stephanie Lonergan • 344-1253	Victoria Robinson • 686-1937
Anthology	Seve Johnston • 342-7984	
Book Fair	Seve Johnston • 342-7984	
Cookie Dough Fundraiser.	Cary Hancock • 345-2180	
Edison EEF	Jayman Yi • 349-0826	Sara O'Dell • 343-1214, Eryn Gregory • 343-1223
	Peggy Hinsman • 684-0076, Gary Powell • 683-6503	
Fall Directory	Paul Curtis • 344-7365	
Front Case Display	Deborah Dailey • 343-3743,	
Head Lice Checks	volunteer needed	
Health Room	volunteer needed	
Health Screening	Joan Narin • 687-0784	
Jogathon	Michelle Mikkelsen • 342-6458	Cary Hancock • 345-2180, Sandy Glaudin • 345-5584
Kids Night Out	Julie Golf • 345-5445	Sandy Glaudin • 345-5584
Library	Seve Johnston • 342-7984	
Newsletter	Bev Mayhew • 484-4143	
Ocean Week	Pat Williams • xx	
Peace Makers	Robin Latimer • 485-1254	
Project Fair	Seve Johnston • 342-7984	
Recess Volunteers	volunteers needed	
Scrip Sales	Kathi Wiederhold • 485-6505	Laurel Anderson • 485-2369
T-shirt Sales	Jenny Leavitt • 302-2877	
Web Site	Jill Hollingsworth • 689-8240	
Women's History Week	Denise Jessup • 683-7641	
5th Grade Celebration	volunteers needed	
Yearbook	Julie Golf • 345-5445	

THE TOUCAN TIMES

Editor Beverly Mayhew
 Layout Kerry Lutz
 Photography Mickey Stellavato



The *Toucan Times* welcomes submissions of photographs, stories, and ideas. Please leave your material in the *Toucan Times* mailbox in the school office or submit text by email to bmayhew@ulum.com by the 15th of every month. Please supply your name, phone number or email address on all submissions. In the event of errors, please notify the editor so that we may make corrections.

Please submit articles electronically, if possible, by email.

Voice mail to report that a student will be absent: 334-4716
 Edison web site: <http://schools.4j.lane.edu/edison/index.html>

Frequently Asked Questions

Q: Who is ESI?

A: ESI (Electronic Scrip Inc.) is a California-based corporation dedicated to establishing relationships between commerce and community to provide resources to organizations that support children. ESI's board and officers include individuals with diverse backgrounds which include computer technology, banking systems, marketing, accounting, and the nonprofit sector. ESI has developed state-of-the-art technology for administration of the eScrip program. ESI's program and systems have met the strict requirements of participating merchants in the areas of safety, security, and confidentiality.

Q: How does the eScrip program work?

A: 1. Supporters register their existing grocery loyalty, Debit, ATM, and credit cards online at www.escrip.com, or by mailing the eScrip registration form. 2. Supporters use their registered cards when paying for merchandise at participating merchants. (Visit www.escrip.com for participating merchant locations, and cards accepted by each merchant.) 3. The participating merchant contributes a percentage of the sale to your group.

Q: What cards does the eScrip program accept for registration?

A: Grocery loyalty cards (from participating grocers), Debit, ATM, VISA, MasterCard, American Express, Discover cards, Diner's Club.

Q: Is there any cost to our school/group to enroll in the eScrip Program?

A: There is no up front cost to your group. An administration fee will be deducted from your supporters' contributions each month. eScrip has found this to be the most effective way for groups to generate a large number of supporters. eScrip retains 15% of a group's total monthly contribution per month (see explicit details at www.escrip.com).

Q: How often will our organization receive our contributions?

A: Contributions will be automatically deposited into your group's designated checking account monthly. You can expect this deposit along with supporter contribution report posting approximately 90 days after month end. Your group and supporters may access detailed monthly eScrip activity information on the eScrip website at www.escrip.com.

Q: How do supporters know they are an active eScrip participant?

A: Your supporters will receive a welcome letter from eScrip which confirms their participation in the eScrip program.

www.escrip.com



**Sign up today!
It costs you nothing...
but the rewards can mean
EVERYTHING!**



	eScrip Merchants contribute...	In as little as 12 months your contributions will be...	100 families
If you spend... (per month)	\$250	\$30	\$3,000
	\$400	\$60	\$6,000
	\$550	\$126	\$12,600
	\$650	\$168	\$16,800

These numbers are for illustrative purposes only. Merchant contribution percentages vary by merchant, please visit www.escrip.com for your eScrip merchant contributions in your area.

**To sign up online TODAY...
visit www.escrip.com or you can complete this form and send it to the address below.**



**Join the eScrip program NOW!
It's Free! It's Easy! It's Powerful!**

ATTENTION: GROUP COORDINATOR
FILL IN GROUP NAME AND GROUP eSCRIP I.D.# PRIOR TO DUPLICATION AND DISTRIBUTION.

Edison School **6163859**

Group Name Group ID#

Group Names and ID#s are available at www.escrip.com.

If you are currently signed up, do not use this form to make changes, visit www.escrip.com and click on "my escrip".

STEP 1

Last Name* First Name*

Address*

City* State* Zip Code*

Email Address* *(Will use to welcome you and provide program updates)*

Phone Number * required information

STEP 2

YOU MUST REGISTER AT LEAST ONE CARD TO JOIN THE PROGRAM.

Card Type	Card Number	Exp. Date
	<input type="text"/>	<input type="text"/>
	<input type="text"/>	<input type="text"/>
	<input type="text"/>	<input type="text"/>

Grocery Club CardType: Safeway, Pavilions, Vons, Genuardi's, PW, Adams Debit/Credit
Card Type: MasterCard, VISA, American Express, Discover, ATM/Debit Cards

*Some merchants not available in all locations. Visit www.escrip.com for program details.

STEP 3

Return completed form to: **Electronic Scrip Inc, P.O.Box 6988,
Auburn, CA 95604-6988**

With your help, our school can receive cash from your everyday purchases.

ESI has made a firm commitment to protect all customer information provided. ESI will not license, sell, exchange or distribute any personally identifying information about eScrip participants to any third parties not directly involved in the eScrip program. For complete program terms and conditions, visit www.escrip.com

seattle-portland_contributin_062804